



## Transportation Air Live Roller Conveyor (TA)



### MECHANICAL CHARACTERISTICS

#### Bed Section:

6" Deep x 1 3/8" Flange x 10 Gauge frame in 12" increments between 12" and 144".

#### Galvanized Rollers:

1 7/8" Diameter, 16 Gauge, with 7/16" hex axle.

#### Drives:

6", 8", or 10" Center Drives and 6" or 8" End Drives.

Lagged pulley with automatic spring take-up on center drive. 8" wide Type 6 Friction x Friction belting.

3/4 HP to 5 HP 230V-460V/3-Phase/60Hz. "C" face TEFC motor with reducer. Speed range is 60-320 FPM.

#### Terminal End:

4" or 6" Diameter plain pulley with pop-out roller.

#### Axle Isolators:

Specially designed conductive plastic insert isolates carrying roller axles from the conveyor frame to reduce noise and prevent wear.

### FEATURES

Automotion's quiet running, versatile and economical live roller conveyor components are important elements of conveyor systems that require side loading and smooth integration of a countless number of processed materials from small to large sizes in weights up to 100 pounds per foot. Automotion's Transportation Air Conveyor are motor driven and provide a positive, non-adjustable driving force to the carrying roller assembly for positive transportation of product loads. The PLC controlled air feature responds to conditions monitored downstream, engaging and disengaging the drive belt as needed.

Automotion's pre-engineered belt driven live roller conveyor components are economical, versatile, flexible, durable, and are easy to install. These components feature specially designed and easy to replace belts, and galvanized rollers. Automotion Transportation Air Live Roller Conveyor is easy to maintain for long life.



### SPECIFICATIONS

#### Typical Applications:

Transportation

#### Live Load Capacity:

Up to 100 lbs/ft. depending on width, roller centers, supports, etc.

#### Nominal Widths:

18", 24", 30" & 36"

#### Between Rail Widths:

15 1/2", 21 1/2", 27 1/2" & 33 1/2"

#### Carrying Roller Centers:

2", 3" & 4"

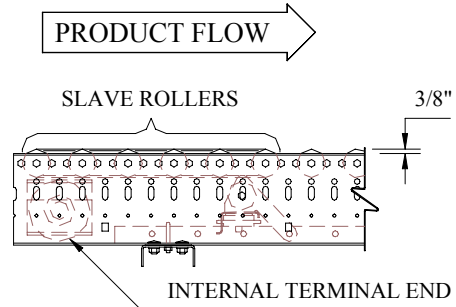
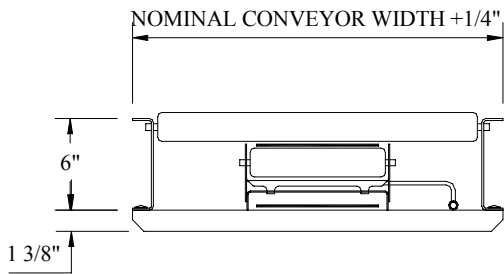
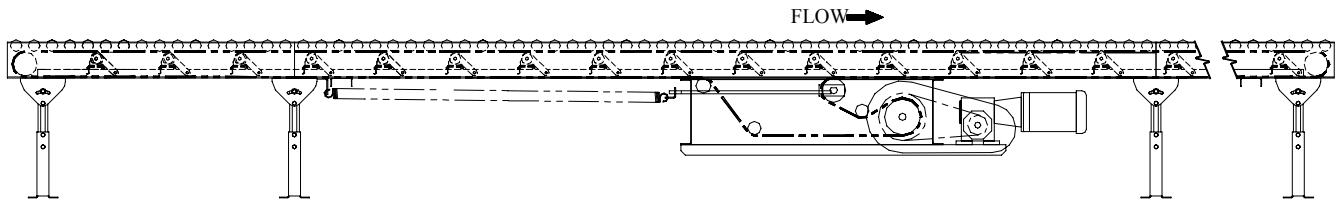
#### Lifter Roller Centers:

6" & 12"



#### Options:

Take-Ups, Guard Rails, and & Supports  
High Speed Rollers (std. over 180 FPM).  
Cog Belt Drive  
Power Take-Off Units  
Pop-Out Carrying Rollers  
Coated Rollers  
Machine Crown Pulleys  
Terminal End Covers  
Pop-Out Roller at Terminal End  
Automatic & Manual Air Brakes  
Powder Coat or Galvanized Finish



11000 South Lavergne Avenue Oak Lawn, Illinois 60453-5500  
 Phone: 708-229-3700 Fax: 708-229-3799  
[www.automotionconveyors.com](http://www.automotionconveyors.com)  
[info@automotionconveyors.com](mailto:info@automotionconveyors.com)