



Incline / Decline Belt Conveyor



FEATURES

An outstanding and dependable conveyor that is pre-engineered to transport up to 130 pounds per foot of varied products and materials from one elevation to another, in either direction. The degree of incline is from 7 degrees to 27 degrees.

Automotion's Incline/Decline Slider Bed Belt Conveyor is a quality unit that is economically priced. This unit runs smoothly and quietly, is easy to maintain and is manufactured to withstand heavy, continuous day-to-day use.

Wherever you need to move your products or materials up or down, at any point in the conveyor line, there's an incline or decline modular unit available that can be installed easily into any conveyor system. Automotion's pre-engineered Incline/Decline Slider Bed Belt Conveyor is a versatile performer with a long life. This unit features galvanized return rollers, rugged rough top belts, fully enclosed drive components, and optional power sources. Power feeder units and are constructed of heavy gauge metal.

MECHANICAL CHARACTERISTICS

Bed Section:

5 1/4" Deep x 12 Gauge frame in 6" increments between 12" and 144".

Galvanized Belt Return Rollers:

1 7/8" Diameter, 16 Gauge, carrying rollers with 7/16" hex axle on nominal 6' centers.

Drives:

6", 8", or 10" Center Drives and 6" or 8" End Drives.

Lagged pulley with automatic spring take-up on center drive.

3/4 HP to 5 HP 230V-460V/3-Phase/60Hz. "C" face TEFC motor with reducer. Speed range is 60-320 FPM.

Terminal End:

4", 5" or 6" Diameter plain pulley with pop-out roller.

Belting:

Type 3 Ruff Top Surface x Friction Surface.

Axle Isolators:

Specially designed conductive plastic insert isolates return roller axles from the conveyor frame to reduce noise and prevent wear.

SPECIFICATIONS

Typical Applications:

Transportation
Elevation Changes
Trash Conveyor

Live Load Capacity:

Up to 130 lbs/ft. depending on width, roller centers, supports, etc.

Nominal Widths:

18", 24", 30", 36", 42" & 48"

Standard Belt Widths:

14", 20", 24", 30", 36" & 42"

Nose over Splice:

NOS-1 Adjustable 7 to 17 degrees

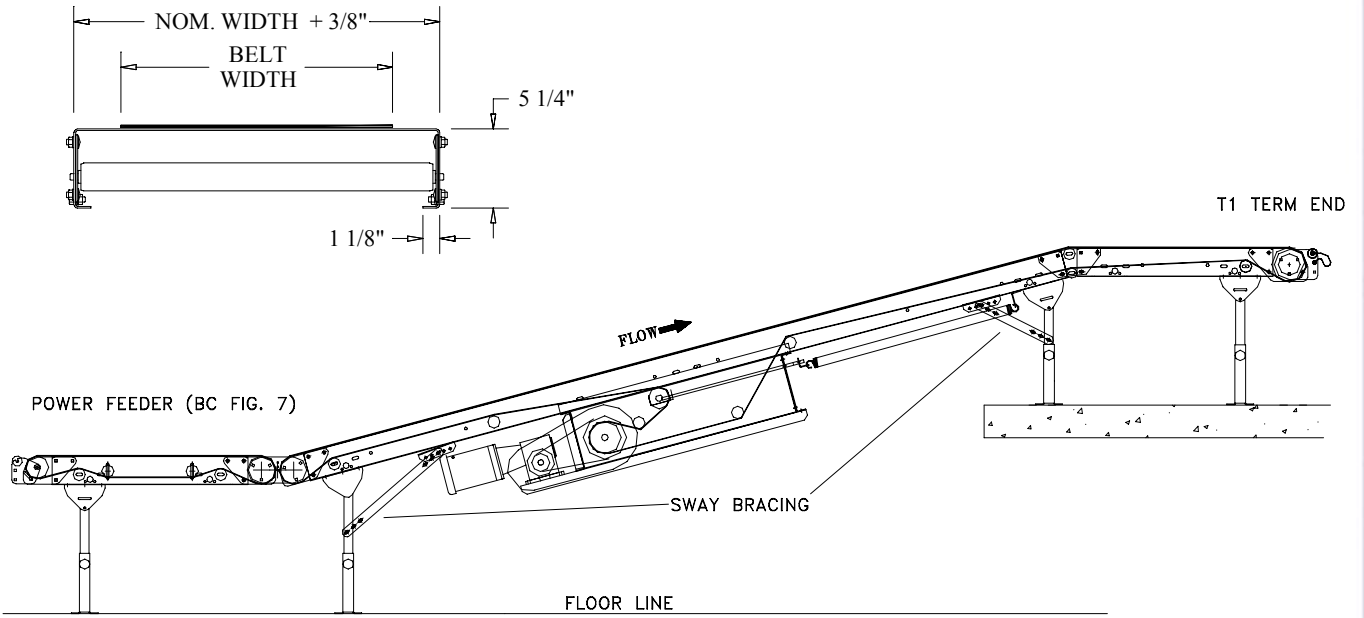
NOS-2 Adjustable 17 to 27 degrees

Power Feeder Unit:

Type 1 endless black friction surface, slave driven belt. Bed length equal to nominal width plus 12".

Options:

Take-Ups, Guard Rails, and & Supports
High Speed Rollers (std. over 180 FPM)
Drop Kit
Bottom Covers
Punched for Top Mount Guard Rail
Synchronous Belt Drive
Cog belt Drive
Powder Coat or Galvanized Finish



11000 South Laverne Avenue Oak Lawn, Illinois 60453-5500
 Phone: 708-229-3700 Fax: 708-229-3799
www.automotionconveyors.com
info@automotionconveyors.com